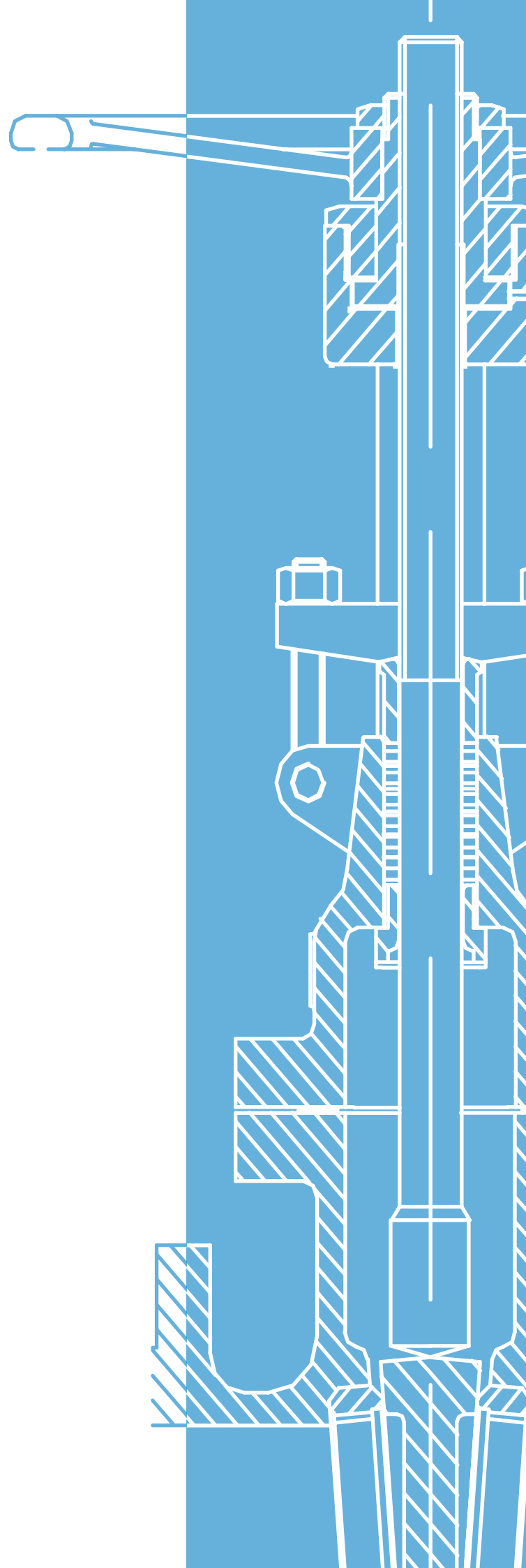


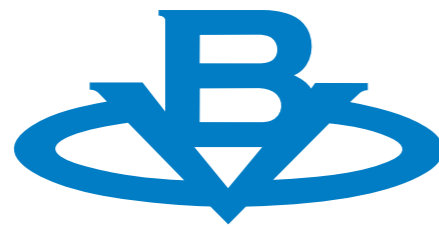


CVB VALVES S.R.L.

Gate Valves

Oil & Gas, Naval , Petrochemical, Water,
Energy & Desalination Fields





CVB VALVES S.R.L.

ABOUT US

CVB Valves (hereafter CVB) designs and manufactures engineered and tailor-made valves and equipment; our production range include all type of **Butterfly and Control Valves** for On/Off and Control of flows. It includes Concentric rubber-lined, Double-Offset, Triple Offset Butterfly Valves, and Globe valves both for On-Off and Control duties.

Our company was founded in 1976 in Milan, Italy. We are proud to have over 40 years of experience in designing customised valve solutions for our Customers' challenging and exacting standards combining reliability, efficiency, dedicated solutions with the highest safety standards for the most extreme operating environmental applications. Long and vast track record supplying to **Oil&Gas, Energy, Water, Desalination, Naval industries and Cryogenics service** are testament of our passion and commitment in providing the utmost of Technology, Engineering, Innovation, Quality and Service to our Customers. With our dedicated manufacturing facilities in Italy, our products are made with high quality materials customized to meet our Customers' needs.

VISION

CVB's vision is to be a fast, flexible and for reliable global leader in manufacturing and servicing of Special Alloys Triple and Double Offset, Butterfly and Globe Control valves, with customized solutions, of large and special valves, as well as standard ones to suit customers' needs while being a single source supplier, and Ancillaries, Control & Safety Systems.

DESIGN

With 40 years of field experience, our Tech Dept. are well proven and can meet any challenge of an ever evolving and more demanding industry applications. Combined with the quality of our materials, we can meet our Customer needs, allowing them to exceed their plant operational targets by reducing hazards, increasing safety, and optimizing any plant performance. We can help you to solve your operational challenges.

MANUFACTURE

Our products are customized to meet our Customer needs and manufactured in Italy/Europe with high quality materials. CVB tailored solutions meet every industrial demanding applications challenge, at the same time helping to increasing plant performance and reduce life-cycle costs.

SERVICE

Our Customers' Satisfaction is our strategic goal; at CVB we support our Customers with their needs, starting from their budgeting processes through engineering development, state of the art manufacturing, quick delivery, repair service, consultancies, surveys, and reliable after sales support. We are just one call away.

GATE VALVES

Thanks to their unique combination of reliability and compactness, **CVB GTV Series valves** have excellence performances, easy maintenance, guaranteeing high level of reliability and service ability. Gate valves features and design made them fit for purpose in shut-off duty. **GTV Gate valves** are available in the following designs: Bolted bonnet, O.S.& Y.



GATE VALVES (GTV)

CORE FEATURES

- Bolted bonnet, O.S.& Y.
- Solid or flexible wedge
- Renewable seats
- Rising stem – Non rising Handwheel

BENEFITS OF GTV SERIES

Metal seat design to:

- Prevent wear
- Guarantee zero leakage
- Guarantee longer service life
- Allow for low operating torques
- Achieve tight seal from bi-directional pressure
- Resist to corrosion and erosion

Soft seat design to:

- Prevent wear
- Guarantee zero leakage

Actuation:

- Top flange allows easy coupling to manual, pneumatic and electric actuators
- ISO 5211 standard



BODY STYLES

Bolted bonnet
O.S.& Y.

PRODUCTION RANGE

2" – 36" ANSI CI.150
2" – 30" ANSI CI.300
2" – 30" ANSI CI.600
2" – 20" ANSI CI.900
2" – 16" ANSI CI.1500
2" – 12" ANSI CI.2500
larger size upon request

RATING

ANSI CI.150 – 300 – 600 – 900 – 1500
– 2500

END CONNECTIONS

Flanged / Buttwelded ends / Threaded

MATERIALS

- Carbonel
- Alloy Steel
- Duplex - SuperDuplex
- Monel
- Aluminium bronze
- Titanium
- Hastelloy
- Austenitic Steel
- Inconel

APPLICABLE STANDARDS

Design:
API 600/ BS EN ISO 10434/ ANSI B
Face to face:
ANSI B 16.10
Flange:
B16.5/ B16.47
Bw ends:
ANSI B 16.25
Testing:
API 598 / BS EN ISO 12266 Part 1

GATE VALVES (GTV) - 100 LBS

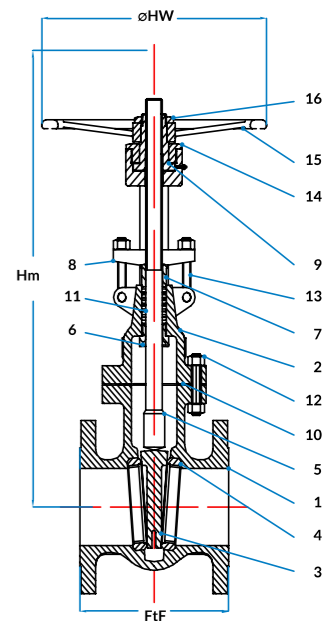
Standard material

Item	Parts	STD. Carbon steel	High Temp Carbon Steel	Low Temp Carbon Steel	Stainless Steel
1	BODY	ASTM A216 WCB	ASTM A217 W06/EC9/C5/C12	ASTM A352 LCB/LCC/LC3	ASTM A351 CF3/CF8/CF3M/CF8M
2	BONNET				
3	WEDGE	ACCORDING TO API 600 TRIM NUMBER			
4	SEAT RING				
5	STEM				
6	BACK SEAT				
7	GLAND	A105	A182 F304L/A182 F3 16L		
8	GLAND FLANGE				
9	YOKE SLEEVE	NI RESIST			
10	GASKET	FLAT REINFORCED GRAPHITE / FLAT PTFE			
11	STEM PACKING	GRAPHITE / PTFE			
12	BONNET STUD BOLTS/ NUTS	A193 B7/ A194 2H	A193 B16 / A194 Gr4	A320 I7 / A320 Gr7	A193 B8 / A194 Gr8
13	EYEBOLTS/ NUTS				
14	YOKE SLEEVE NUT	CARBON STEEL			
15	HANDWHEEL	CARBON STEEL			
16	HANDWHEEL NUT	CARBON STEEL			

Dimensions

Size	2"	3"	4"	6"	8"	10"	12"	14"	16"	18"	20"	24"	30"	34"	36"
FtF-RF	178	203	229	267	292	330	356	381	406	432	457	508	610	711	711
FtF-BW	216	282	305	403	419	457	502	572	610	660	711	813	914	1016	1016
Hm	425	530	605	790	1000	1200	1420	1610	1780	2000	2140	2610	3420	4070	4365
HW	200	225	250	300	350	400	450	500	600	600	720	800	please refer to GAD		

Some measures [mm] are indicative and might be subjected to changes



APPLICABLE STANDARDS

Design:
API 600/BS EN ISO 10434 /ANSI B
16-34
Face to face:
ANSI B 16.10
Flange:
B16.5/ B16.47
Bw ends:
ANSI B 16.25
Testing:
API 598 / BS EN ISO 12266 Part 1

MATERIALS

- Carbon Steel
- Stainless Steel
- Alloy Steel
- Duplex - SuperDuplex
- Monel
- Aluminium bronze
- Titanium
- Hastelloy
- Austenitic Steel
- Inconel

CORE FEATURES

- Bolted bonnet, O.S &Y.
- Solid or Flexible wedge
- Renewable seats
- Rising stem - Non rising Hand wheel

SPECIAL EXECUTION

Available upon request

GATE VALVES (GTV) - 300 LBS

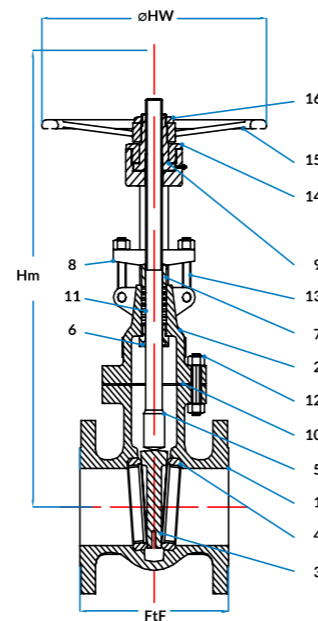
Standard material

Item	Parts	STD. Carbon steel	High Temp Carbon Steel	Low Temp Carbon Steel	Stainless Steel
1	BODY	ASTM A216 WCB	ASTM A217 WC6/EC9/C5/C12	ASTM A352 LCB/LCC/LC3	ASTM A351 CF3/CF8/CF3M/CF8M
2	BONNET				
3	WEDGE	ACCORDING TO API 600 TRIM NUMBER			
4	SEAT RING				
5	STEM				
6	BACK SEAT				
7	GLAND	A105	A182 F304L/A182 F316L		
8	GLAND FLANGE				
9	YOKE SLEEVE	NI RESIST			
10	GASKET	SPIRAL WOUND REINFORCED GRAPHITE / PTFE			
11	STEM PACKING	GRAPHITE / PTFE			
12	BONNET STUD BOLTS/ NUTS	A193 B7/ A194 2H	A193 B16 / A194 Gr4	A320 I7 / A320 Gr7	A193 B8 / A194 Gr8
13	EYEBOLTS/ NUTS				
14	YOKE SLEEVE NUT	CARBON STEEL			
15	HANDWHEEL	CARBON STEEL			
16	HANDWHEEL NUT	CARBON STEEL			

Dimensions

Size	2"	3"	4"	6"	8"	10"	12"	14"	16"	18"	20"	24"	26"	28"	30"
FtF-RF	216	282	305	403	419	457	502	762	838	914	991	1143	1245	1346	1397
FtF-BW	232	298	321	419	435	473	518	778	854	930	1010	1165	1271	1372	1422
Hm	435	560	650	830	1080	1245	1510	1710	1870	2090	2310	2810	3120	3310	3535
HW	200	225	250	350	400	450	500	600	600	720	800	1000	please refer to GAD		

Some measures [mm] are indicative and might be subjected to changes



APPLICABLE STANDARDS

Design:
API 600/BS EN ISO 10434 /ANSI B 16-34
Face to face:
ANSI B 16.10
Flange:
B16.5/ B16.47
Bw ends:
ANSI B 16.25
Testing:
API 598 / BS EN ISO 12266 Part 1

MATERIALS

- Carbon Steel
- Stainless Steel
- Alloy Steel
- Duplex - SuperDuplex
- Monel
- Aluminium bronze
- Titanium
- Hastelloy
- Austenitic Steel
- Inconel

CORE FEATURES

- Bolted bonnet, O.S &Y.
- Solid or Flexible wedge
- Renewable seats
- Rising stem - Non rising Hand wheel

SPECIAL EXECUTION

Available upon request

GATE VALVES (GTV) - 600 LBS

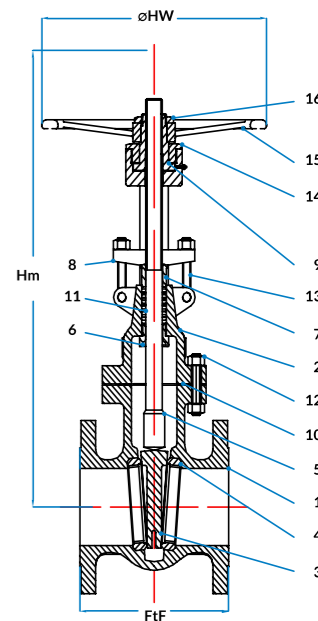
Standard material

Item	Parts	STD. Carbon steel	High Temp Carbon Steel	Low Temp Carbon Steel	Stainless Steel
1	BODY	ASTM A216 WCB	ASTM A217 WC6/EC9/C5/C12	ASTM A352 LCB/LCC/LC3	ASTM A351 CF3/CF8/CF3M/CF8M
2	BONNET				
3	WEDGE	ACCORDING TO API 600 TRIM NUMBER			
4	SEAT RING				
5	STEM				
6	BACK SEAT				
7	GLAND	A105	A182 F304L/A182 F316L		
8	GLAND FLANGE				
9	YOKE SLEEVE	NI RESIST			
10	GASKET	SPIRAL WOUND REINFORCED GRAPHITE / PTFE			
11	STEM PACKING	GRAPHITE / PTFE			
12	BONNET STUD BOLTS/ NUTS	A193 B7/ A194 2H	A193 B16 / A194 Gr4	A320 I7 / A320 Gr7	A193 B8 / A194 Gr8
13	EYEBOLTS/ NUTS				
14	YOKE SLEEVE NUT	CARBON STEEL			
15	HANDWHEEL	CARBON STEEL			
16	HANDWHEEL NUT	CARBON STEEL			

Dimensions

Size	2"	3"	4"	6"	8"	10"	12"	14"	16"	18"	20"	24"	30"	34"	36"
FtF-RF	292	356	432	559	660	787	838	889	991	1092	1194	1397	1651	Available on request	
FtF-BW	295	359	435	562	663	790	841	892	994	1095	1200	1407	1667		
Hm	450	575	680	925	1120	1310	1560	1760	1930	2125	2195	2725	3900		
HW	200	250	300	450	500	600	720	800	1000	please refer to GAD					

Some measures [mm] are indicative and might be subjected to changes



APPLICABLE STANDARDS

Design:
API 600/BS EN ISO 10434 /ANSI B 16-34
Face to face:
ANSI B 16.10
Flange:
B16.5/ B16.47
Bw ends:
ANSI B 16.25
Testing:
API 598 / BS EN ISO 12266 Part 1

MATERIALS

- Carbon Steel
- Stainless Steel
- Alloy Steel
- Duplex - SuperDuplex
- Monel
- Aluminium bronze
- Titanium
- Hastelloy
- Austenitic Steel
- Inconel

CORE FEATURES

- Bolted bonnet, O.S &Y.
- Solid or Flexible wedge
- Renewable seats
- Rising stem - Non rising Hand wheel

SPECIAL EXECUTION

Available upon request

GATE VALVES (GTV) - 900 LBS

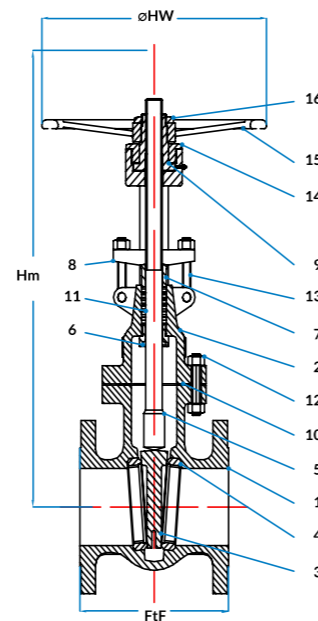
Standard material

Item	Parts	STD. Carbon steel	High Temp Carbon Steel	Low Temp Carbon Steel	Stainless Steel
1	BODY	ASTM A216 WCB	ASTM A217 WC6/EC9/C5/C12	ASTM A352 LCB/LCC/LC3	ASTM A351 CF3/CF8/CF3M/CF8M
2	BONNET				
3	WEDGE	ACCORDING TO API 600 TRIM NUMBER			
4	SEAT RING				
5	STEM				
6	BACK SEAT				
7	GLAND	A105	A182 F304L/A182 F316L		
8	GLAND FLANGE				
9	YOKE SLEEVE	NI RESIST			
10	GASKET	SPIRAL WOUND REINFORCED GRAPHITE / PTFE			
11	STEM PACKING	GRAPHITE / PTFE			
12	BONNET STUD BOLTS/ NUTS	A193 B7/ A194 2H	A193 B16 / A194 Gr4	A320 I7 / A320 Gr7	A193 B8 / A194 Gr8
13	EYEBOLTS/ NUTS				
14	YOKE SLEEVE NUT	CARBON STEEL			
15	HANDWHEEL	CARBON STEEL			
16	HANDWHEEL NUT	CARBON STEEL			

Dimensions

Size	2"	3"	4"	6"	8"	10"	12"	14"	16"	18"	20"	24"	30"	34"	36"
FtF-RF		381	457	610	737	838	965	1029	1130	1219	1321				
FtF-BW	Use class 1500	384	460	613	740	841	968	1039	1140	1232	1334				
Hm		590	685	930	1140	1340	1750	1915	1955	2160	2360				
HW		300	350	500	600	720	please refer to GAD								

Some measures [mm] are indicative and might be subjected to changes



APPLICABLE STANDARDS

Design:
API 600/BS EN ISO 10434 /ANSI B 16-34
Face to face:
ANSI B 16.10
Flange:
B16.5/ B16.47
Bw ends:
ANSI B 16.25
Testing:
API 598 / BS EN ISO 12266 Part 1

MATERIALS

- Carbon Steel
- Stainless Steel
- Alloy Steel
- Duplex - SuperDuplex
- Monel
- Aluminium bronze
- Titanium
- Hastelloy
- Austenitic Steel
- Inconel

CORE FEATURES

- Bolted bonnet, O.S &Y.
- Solid or Flexible wedge
- Renewable seats
- Rising stem - Non rising Hand wheel

SPECIAL EXECUTION

Available upon request

GATE VALVES (GTV) - 1500 LBS

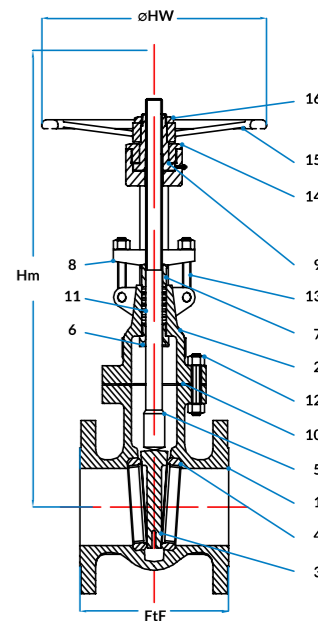
Standard material

Item	Parts	STD. Carbon steel	High Temp Carbon Steel	Low Temp Carbon Steel	Stainless Steel
1	BODY	ASTM A216 WCB	ASTM A217 WC6/EC9/C5/C12	ASTM A352 LCB/LCC/LC3	ASTM A351 CF3/CF8/CF3M/CF8M
2	BONNET				
3	WEDGE	ACCORDING TO API 600 TRIM NUMBER			
4	SEAT RING				
5	STEM				
6	BACK SEAT				
7	GLAND	A105	A182 F304L/A182 F316L		
8	GLAND FLANGE				
9	YOKE SLEEVE	NI RESIST			
10	GASKET	SPIRAL WOUND REINFORCED GRAPHITE / PTFE			
11	STEM PACKING	GRAPHITE / PTFE			
12	BONNET STUD BOLTS/ NUTS	A193 B7/ A194 2H	A193 B16 / A194 Gr4	A320 I7 / A320 Gr7	A193 B8 / A194 Gr8
13	EYEBOLTS/ NUTS				
14	YOKE SLEEVE NUT	CARBON STEEL			
15	HANDWHEEL	CARBON STEEL			
16	HANDWHEEL NUT	CARBON STEEL			

Dimensions

Size	2"	3"	4"	6"	8"	10"	12"	14"	16"	18"	20"	24"	30"	34"	36"
FtF-RF	368	470	546	705	832	991	1130	1257	1384						
FtF-BW	371	473	549	711	842	1001	1146	1276	1407						
Hm	505	675	750	1010	1260	1530	1830	1995	2120						
HW	250	350	400	600	720	please refer to GAD									

Some measures [mm] are indicative and might be subjected to changes



APPLICABLE STANDARDS

Design:
API 600/BS EN ISO 10434 /ANSI B 16-34
Face to face:
ANSI B 16.10
Flange:
B16.5/ B16.47
Bw ends:
ANSI B 16.25
Testing:
API 598 / BS EN ISO 12266 Part 1

MATERIALS

- Carbon Steel
- Stainless Steel
- Alloy Steel
- Duplex - SuperDuplex
- Monel
- Aluminium bronze
- Titanium
- Hastelloy
- Austenitic Steel
- Inconel

CORE FEATURES

- Bolted bonnet, O.S &Y.
- Solid or Flexible wedge
- Renewable seats
- Rising stem - Non rising Hand wheel

SPECIAL EXECUTION

Available upon request

GATE VALVES (GTV) - 2500 LBS

Standard material

Item	Parts	STD. Carbon steel	High Temp Carbon Steel	Low Temp Carbon Steel	Stainless Steel
1	BODY	ASTM A216 WCB	ASTM A217 WC6/EC9/C5/C12	ASTM A352 LCB/LCC/LC3	ASTM A351 CF3/CF8/CF3M/CF8M
2	BONNET				
3	WEDGE	ACCORDING TO API 600 TRIM NUMBER			
4	SEAT RING				
5	STEM				
6	BACK SEAT				
7	GLAND	A105	A182 F304L/A182 F316L		
8	GLAND FLANGE				
9	YOKE SLEEVE	NI RESIST			
10	GASKET	SPIRAL WOUND REINFORCED GRAPHITE / PTFE			
11	STEM PACKING	GRAPHITE / PTFE			
12	BONNET STUD BOLTS/ NUTS	A193 B7/ A194 2H	A193 B16 / A194 Gr4	A320 I7 / A320 Gr7	A193 B8 / A194 Gr8
13	EYEBOLTS/ NUTS				
14	YOKE SLEEVE NUT	CARBON STEEL			
15	HANDWHEEL	CARBON STEEL			
16	HANDWHEEL NUT	CARBON STEEL			

Dimensions

Size	2"	3"	4"	6"	8"	10"	12"	14"	16"	18"	20"	24"	30"	34"	36"
FtF-RF	451	578	673	914	1022	1270	1422								
FtF-BW	454	584	683	927	1038	1293	1444								
Hm	640	795	966	1290	1470	1570	1670								
HW	400	500	600	720	1000	please refer to GAD									

Some measures [mm] are indicative and might be subjected to changes

APPLICABLE STANDARDS

Design:
API 600/BS EN ISO 10434 /ANSI B 16-34
Face to face:
ANSI B 16.10
Flange:
B16.5/ B16.47
Bw ends:
ANSI B 16.25
Testing:
API 598 / BS EN ISO 12266 Part 1

MATERIALS

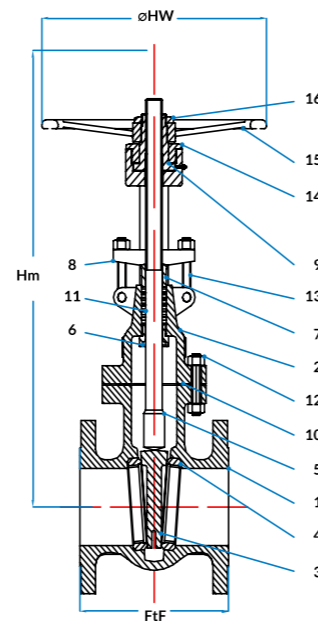
- Carbon Steel
- Stainless Steel
- Alloy Steel
- Duplex - SuperDuplex
- Monel
- Aluminium bronze
- Titanium
- Hastelloy
- Austenitic Steel
- Inconel

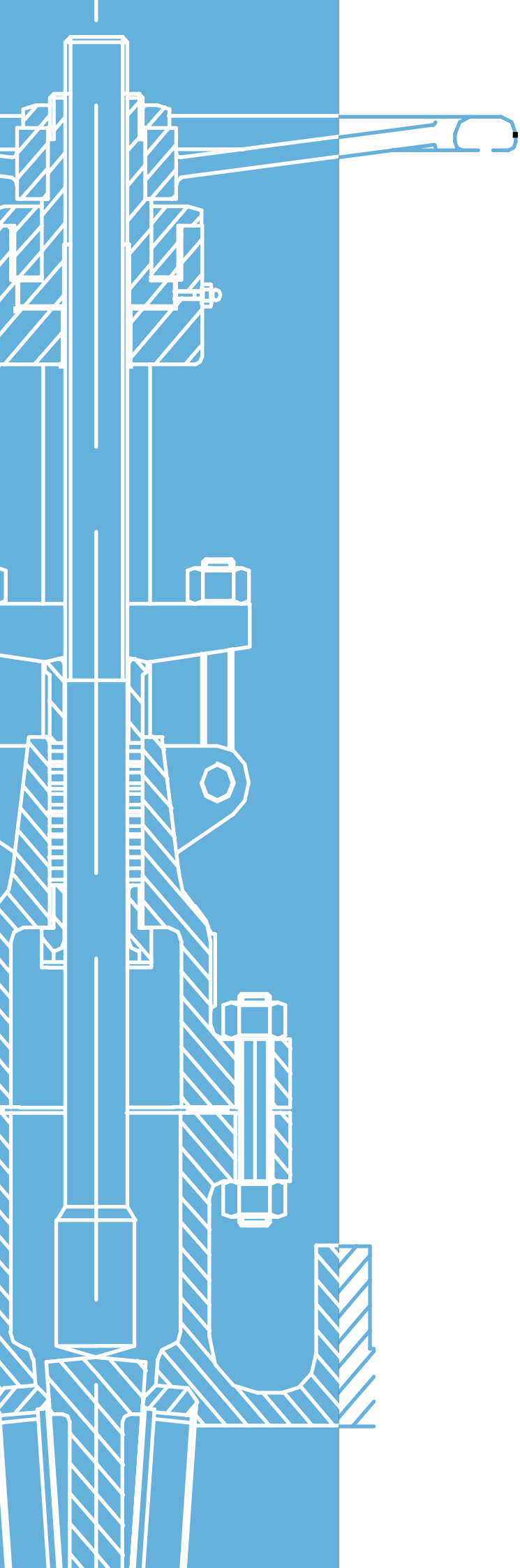
CORE FEATURES

- Bolted bonnet, O.S & Y.
- Solid or Flexible wedge
- Renewable seats
- Rising stem - Non rising Hand wheel

SPECIAL EXECUTION

Available upon request





CVB VALVES S.R.L.

via Industria, 24
20020 Arconate
(MI) - ITALY
(+39) 0331 461737
info@cvbvalves.com
sales@cvbvalves.com

www.cvbvalves.com