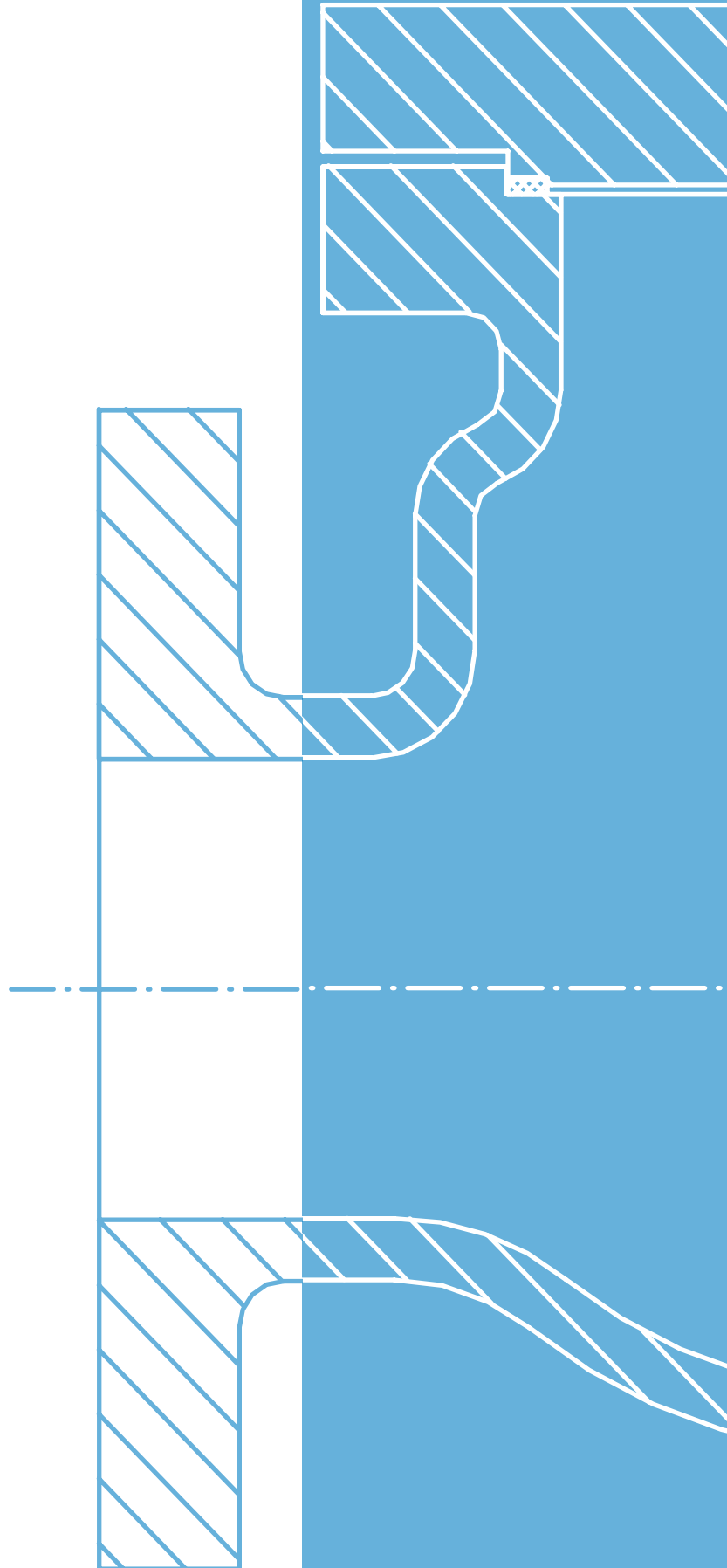




CVB VALVES S.R.L.

Check Valves

Oil & Gas, Naval , Petrochemical, Water,
Energy & Desalination Fields





CVB VALVES S.R.L.

ABOUT US

CVB Valves (hereafter CVB) designs and manufactures engineered and tailor-made valves and equipment; our production range include all type of **Butterfly and Control Valves** for On/Off and Control of flows. It includes Concentric rubber-lined, Double-Offset, Triple Offset Butterfly Valves, and Globe valves both for On-Off and Control duties.

Our company was founded in 1976 in Milan, Italy. We are proud to have over 40 years of experience in designing customised valve solutions for our Customers' challenging and exacting standards combining reliability, efficiency, dedicated solutions with the highest safety standards for the most extreme operating environmental applications. Long and vast track record supplying to **Oil&Gas, Energy, Water, Desalination, Naval industries and Cryogenics service** are testament of our passion and commitment in providing the utmost of Technology, Engineering, Innovation, Quality and Service to our Customers.

With our dedicated manufacturing facilities in Italy, our products are made with high quality materials customized to meet our Customers' needs.

VISION

CVB's vision is to be a fast, flexible and for reliable global leader in manufacturing and servicing of Special Alloys Triple and Double Offset, Butterfly and Globe Control valves, with customized solutions, of large and special valves, as well as standard ones to suit customers' needs while being a single source supplier, and Ancillaries, Control & Safety Systems.

DESIGN

With 40 years of field experience, our Tech Dept. are well proven and can meet any challenge of an ever evolving and more demanding industry applications. Combined with the quality of our materials, we can meet our Customer needs, allowing them to exceed their plant operational targets by reducing hazards, increasing safety, and optimizing any plant performance. We can help you to solve your operational challenges.

MANUFACTURE

Our products are customized to meet our Customer needs and manufactured in Italy/Europe with high quality materials. CVB tailored solutions meet every industrial demanding applications challenge, at the same time helping to increasing plant performance and reduce life-cycle costs.

SERVICE

Our Customers' Satisfaction is our strategic goal; at CVB we support our Customers with their needs, starting from their budgeting processes through engineering development, state of the art manufacturing, quick delivery, repair service, consultancies, surveys, and reliable after sales support. We are just one call away.

CHECK VALVES

Thanks to their unique combination of reliability and compactness, **CVB CHK Series valves**, used to prevent back flow in the line, have excellence performances, easy maintenance, guaranteeing high level of reliability and serviceability.

Check valves features and design make them fit for purpose in shut-off duty and back flow reduction. **CHK Check valves** are available in the following designs: Ball, Swing, Tilting disc and Nozzle.



CHECK VALVES (CHK)

CORE FEATURES

- No external moving parts
- Soft or metal seated
- Antistatic device
- Fire safe
- Antislam system

BENEFITS OF CHK SERIES

Metal seat design to:

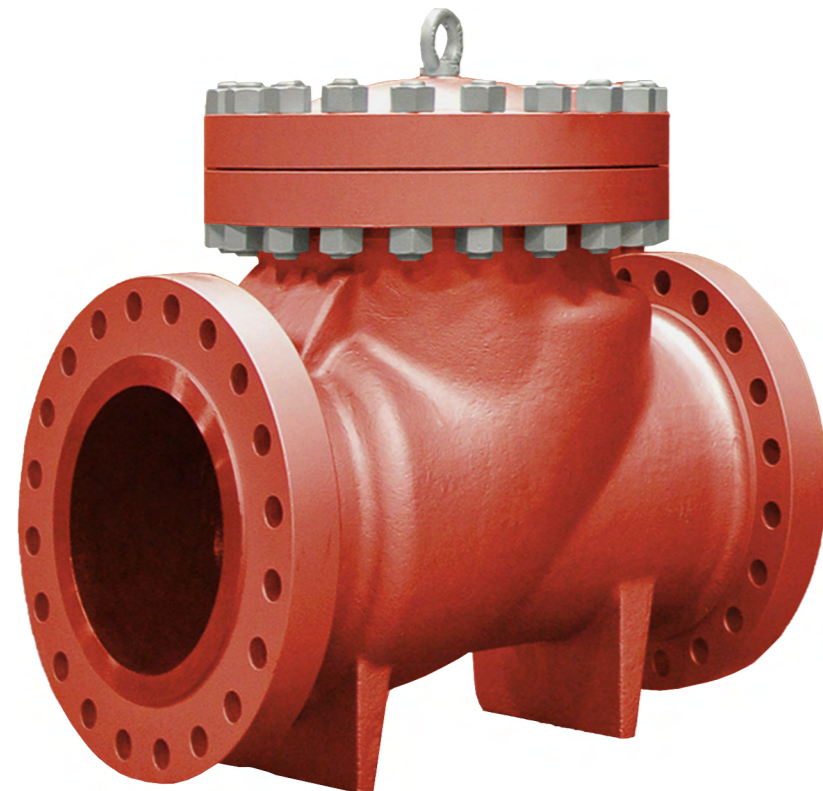
- Prevent wear
- Guarantee zero leakage
- Guarantee longer service life
- Allow for low operating torques
- Achieve tight seal from bi-directional pressure
- Resist to corrosion and erosion

Soft seat design to:

- Prevent wear
- Guarantee zero leakage

Actuation: only on CHK - S and CHK - N series

- Top flange allows easy coupling to manual, pneumatic and electric actuators
- ISO 5211 standard



BODY STYLES

- CHK - B
Ball check
- CHK - S
Swing check
- CHK - T
Tilting disc check
- CHK - N
Nozzle check

PRODUCTION RANGE

CHK - B 1/2" – 6" ANSI Cl.150 - 2500
CHK - S 2" – 24" ANSI Cl.150 - 2500
larger size upon request

CHK - T 1/2" – 8" ANSI Cl.150 - 2500
CHK - N 2" – 24" ANSI Cl.150 - 2500
larger size upon request

RATING

ANSI Cl.150 – 300 – 600 – 900 – 1500 – 2500

MATERIALS

- Carbon Steel
- Stainless Steel
- Alloy Steel
- Duplex - SuperDuplex
- Monel
- Aluminium bronze
- Titanium
- Hastelloy
- Austenitic Steel
- Inconel

APPLICABLE STANDARDS

Design:
ANSI B16.34 / API 6D/ API 608 / ISO 17292
Face to face:
API 6D
Flange:
B16.5/ B16.47
Testing:
API 598
Fugitive emission:
ISO 150484-1
Fire test:
BS 6755-API607-ISO FDIS 10497
NORSOK

CHECK VALVES (CHK) - 150 LBS

Standard material

Item	Parts	STD. Carbon steel	High Temp Carbon Steel	Low Temp Carbon Steel	Stainless Steel
1	BODY	ASTM A216 WCB			
2	COVER	ASTM A 105	ASTM A217 WC6/WC9/C5/C12	ASTM A352 LCB/LCC/LC3	ASTM A351 CF3/CF8/CF3M/CF8M
3	HINGE				
4	DISC	ACCORDING TO API 600 TRIM NUMBER			
5	SEAT RING				
6	HINGE PIN				
7	PLUG	A182 F304L / A182 F316L			
8	GASKET	SPIRAL WOUND REINFORCED GRAPHITE / PTFE			
9	BONNET STUD BOLTS/ NUTS	A193 B7 A194 2H	A193 B16 A194 Gr4	A320 L7 A320 Gr7	A193 B8 A194 Gr8

APPLICABLE STANDARDS

Design:
API 6D/ BS 1868/ ANSI B 16-34
Face to face:
ANSI B 16.10
Flange:
B16.5/ B16.47
Bw ends:
ANSI B 16.25
Testing:
API 598 / BS EN ISO 12266 Part 1

MATERIALS

- Carbon Steel
- Stainless Steel
- Alloy Steel
- Duplex - SuperDuplex
- Monel
- Aluminium bronze
- Titanium
- Hastelloy
- Austenitic Steel
- Inconel

CORE FEATURES

- Bolted bonnet
- Renewable seats
- Swing type disc

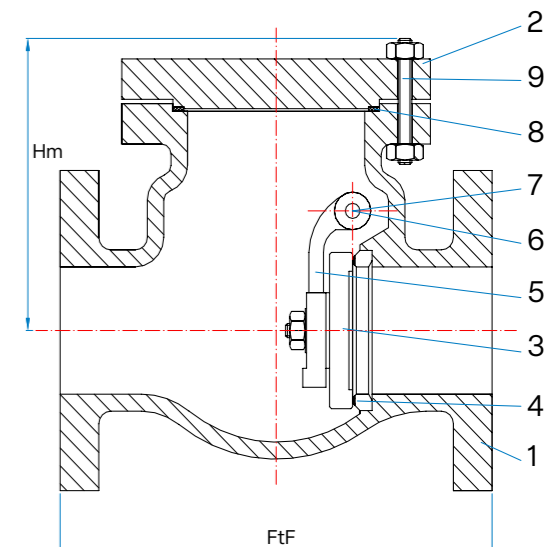
SPECIAL EXECUTION

Available upon request
External shaft for actuator/gear coupling

Dimensions

Size	2"	3"	4"	6"	8"	10"	12"	14"	16"	18"	20"	24"	26"	30"	36"
FtF-RF/BW	203	241	292	356	495	622	698	787	864	978	978	1296	1296	1524	on request
FtF -RTJ	216	254	305	369	508	635	711	800	877	991	991	1309	1309	1537	
Hm	150	180	195	245	305	370	400	435	490	520	560	650	700	1080	

Some measures [mm] are indicative and might be subjected to changes



CHECK VALVES (CHK) - 300 LBS

Standard material

Item	Parts	STD. Carbon steel	High Temp Carbon Steel	Low Temp Carbon Steel	Stainless Steel
1	BODY	ASTM A216 WCB	ASTM A217 WC6/WC9/C5/C12	ASTM A352 LCB/LCC/LC3	ASTM A351 CF3/CF8/CF3M/CF8M
2	COVER	ASTM A 105			
3	HINGE	ACCORDING TO API 600 TRIM NUMBER			
4	DISC	ACCORDING TO API 600 TRIM NUMBER			
5	SEAT RING	ACCORDING TO API 600 TRIM NUMBER			
6	HINGE PIN	ACCORDING TO API 600 TRIM NUMBER			
7	PLUG	A182 F304L / A182 F316L			
8	GASKET	SPIRAL WOUND REINFORCED GRAPHITE / PTFE			
9	BONNET STUD BOLTS/ NUTS	A193 B7 A194 2H	A193 B16 A194 Gr4	A320 L7 A320 Gr7	A193 B8 A194 Gr8

APPLICABLE STANDARDS

Design:
API 6D/ BS 1868/ ANSI B 16-34
Face to face:
ANSI B 16.10
Flange:
B16.5/ B16.47
Bw ends:
ANSI B 16.25
Testing:
API 598 / BS EN ISO 12266 Part 1

MATERIALS

- Carbon Steel
- Stainless Steel
- Alloy Steel
- Duplex - SuperDuplex
- Monel
- Aluminium bronze
- Titanium
- Hastelloy
- Austenitic Steel
- Inconel

CORE FEATURES

- Bolted bonnet
- Renewable seats
- Swing type disc

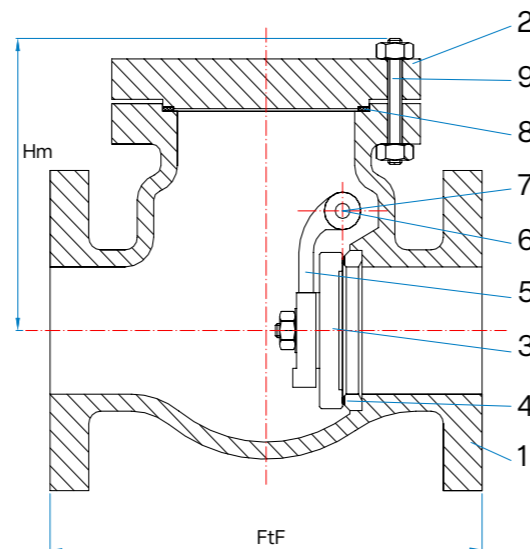
SPECIAL EXECUTION

Available upon request
External shaft for actuator/gear coupling

Dimensions

Size	2"	3"	4"	6"	8"	10"	12"	14"	16"	18"	20"	24"	28"	32"	36"
FtF-RF/BW	267	318	356	444	533	622	711	838	864	978	1016	1346	on request		
FtF-RTJ	283	334	372	460	549	638	727	854	880	994	1035	1368			
Hm	170	200	230	280	360	400	460	490	540	590	620	860			

Some measures [mm] are indicative and might be subjected to changes



CHECK VALVES (CHK) - 600 LBS

Standard material

Item	Parts	STD. Carbon steel	High Temp Carbon Steel	Low Temp Carbon Steel	Stainless Steel
1	BODY	ASTM A216 WCB	ASTM A217 WC6/WC9/C5/C12	ASTM A352 LCB/LCC/LC3	ASTM A351 CF3/CF8/CF3M/CF8M
2	COVER	ASTM A 105			
3	HINGE	ACCORDING TO API 600 TRIM NUMBER			
4	DISC	ACCORDING TO API 600 TRIM NUMBER			
5	SEAT RING	ACCORDING TO API 600 TRIM NUMBER			
6	HINGE PIN	ACCORDING TO API 600 TRIM NUMBER			
7	PLUG	A182 F304L / A182 F316L			
8	GASKET	SPIRAL WOUND REINFORCED GRAPHITE / PTFE			
9	BONNET STUD BOLTS/ NUTS	A193 B7 A194 2H	A193 B16 A194 Gr4	A320 L7 A320 Gr7	A193 B8 A194 Gr8

APPLICABLE STANDARDS

Design:
API 6D/ BS 1868/ ANSI B 16-34
Face to face:
ANSI B 16.10
Flange:
B16.5/ B16.47
Bw ends:
ANSI B 16.25
Testing:
API 598 / BS EN ISO 12266 Part 1

MATERIALS

- Carbon Steel
- Stainless Steel
- Alloy Steel
- Duplex - SuperDuplex
- Monel
- Aluminium bronze
- Titanium
- Hastelloy
- Austenitic Steel
- Inconel

CORE FEATURES

- Bolted bonnet
- Renewable seats
- Swing type disc

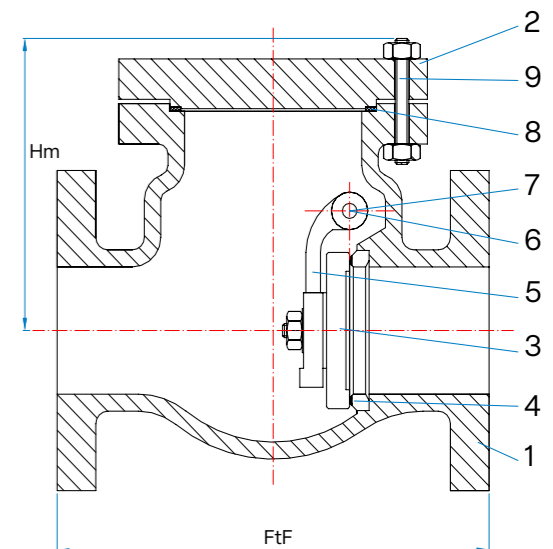
SPECIAL EXECUTION

Available upon request
External shaft for actuator/gear coupling

Dimensions

Size	2"	3"	4"	6"	8"	10"	12"	14"	16"	18"	20"	24"	30"	32"	36"
FtF-RF/BW	292	356	432	559	660	787	838	889	991	1092	1194	1397	1651	on request	
FtF-RTJ	295	359	435	562	663	790	841	892	994	1095	1200	1407	1664		
Hm	180	220	260	325	400	460	540	610	610	740	670	910	1100		

Some measures [mm] are indicative and might be subjected to changes



CHECK VALVES (CHK) - 900 LBS

Standard material

Item	Parts	STD. Carbon steel	High Temp Carbon Steel	Low Temp Carbon Steel	Stainless Steel
1	BODY	ASTM A216 WCB	ASTM A217 WC6/WC9/C5/C12	ASTM A352 LCB/LCC/LC3	ASTM A351 CF3/CF8/CF8M/CF8M
2	COVER	ASTM A 105			
3	HINGE				
4	DISC	ACCORDING TO API 600 TRIM NUMBER			
5	SEAT RING	ACCORDING TO API 600 TRIM NUMBER			
6	HINGE PIN				
7	PLUG	A182 F304L / A182 F316L			
8	GASKET	SPIRAL WOUND REINFORCED GRAPHITE / PTFE			
9	BONNET STUD BOLTS/ NUTS	A193 B7 A194 2H	A193 B16 A194 Gr4	A320 L7 A320 Gr7	A193 B8 A194 Gr8

APPLICABLE STANDARDS

Design:
API 6D/ BS 1868/ ANSI B 16-34
Face to face:
ANSI B 16.10
Flange:
B16.5/ B16.47
Bw ends:
ANSI B 16.25
Testing:
API 598 / BS EN ISO 12266 Part 1

MATERIALS

- Carbon Steel
- Stainless Steel
- Alloy Steel
- Duplex - SuperDuplex
- Monel
- Aluminium bronze
- Titanium
- Hastelloy
- Austenitic Steel
- Inconel

CORE FEATURES

- Bolted bonnet
- Renewable seats
- Swing type disc

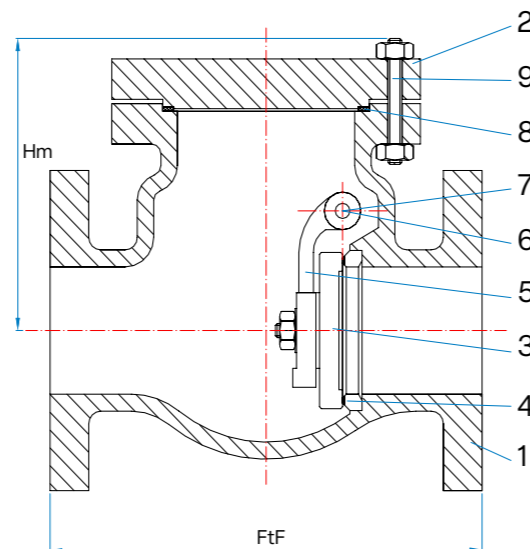
SPECIAL EXECUTION

Available upon request
External shaft for actuator/gear coupling

Dimensions

Size	2"	3"	4"	6"	8"	10"	12"	14"	16"	18"	20"	24"	28"	32"	36"
FtF-RF/BW	Use class 1500	381	457	610	737	838	965	1029	1130	1219	1321	1549	on request		
FtF-RTJ		384	460	613	740	841	968	1039	1140	1232	1334	1568			
Hm		255	300	370	450	515	630	700	730	800	820	1000			

Some measures [mm] are indicative and might be subjected to changes



CHECK VALVES (CHK) - 1500 LBS

Standard material

Item	Parts	STD. Carbon steel	High Temp Carbon Steel	Low Temp Carbon Steel	Stainless Steel
1	BODY	ASTM A216 WCB	ASTM A217 WC6/WC9/C5/C12	ASTM A352 LCB/LCC/LC3	ASTM A351 CF3/CF8/CF8M/CF8M
2	COVER	ASTM A 105			
3	HINGE				
4	DISC	ACCORDING TO API 600 TRIM NUMBER			
5	SEAT RING	ACCORDING TO API 600 TRIM NUMBER			
6	HINGE PIN				
7	PLUG	A182 F304L / A182 F316L			
8	GASKET	SPIRAL WOUND REINFORCED GRAPHITE / PTFE			
9	BONNET STUD BOLTS/ NUTS	A193 B7 A194 2H	A193 B16 A194 Gr4	A320 L7 A320 Gr7	A193 B8 A194 Gr8

APPLICABLE STANDARDS

Design:
API 6D/ BS 1868/ ANSI B 16-34
Face to face:
ANSI B 16.10
Flange:
B16.5/ B16.47
Bw ends:
ANSI B 16.25
Testing:
API 598 / BS EN ISO 12266 Part 1

MATERIALS

- Carbon Steel
- Stainless Steel
- Alloy Steel
- Duplex - SuperDuplex
- Monel
- Aluminium bronze
- Titanium
- Hastelloy
- Austenitic Steel
- Inconel

CORE FEATURES

- Bolted bonnet
- Renewable seats
- Swing type disc

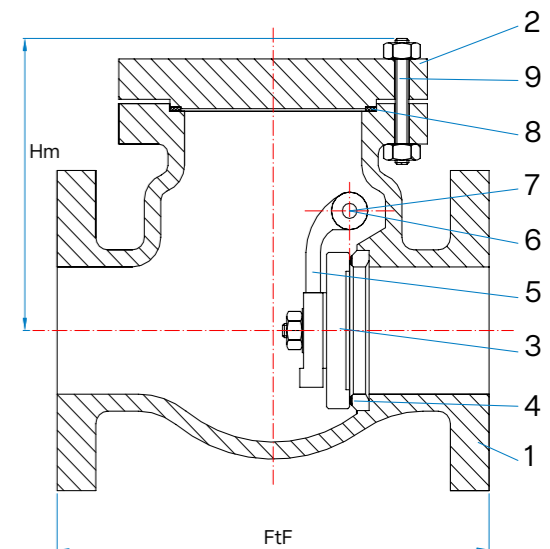
SPECIAL EXECUTION

Available upon request
External shaft for actuator/gear coupling

Dimensions

Size	2"	3"	4"	6"	8"	10"	12"	14"	16"	18"	20"	24"	28"	32"	36"
FtF-RF/BW	368	470	546	705	832	991	1130	1257	on request						
FtF-RTJ	371	473	549	711	842	1000	1146	1276							
Hm	240	300	340	475	525	640	760	820							

Some measures [mm] are indicative and might be subjected to changes



CHECK VALVES (CHK) - 2500 LBS

Standard material

Item	Parts	STD. Carbon steel	High Temp Carbon Steel	Low Temp Carbon Steel	Stainless Steel
1	BODY	ASTM A216 WCB	ASTM A217 WC6/WC9/C5/C12	ASTM A352 LCB/LCC/LC3	ASTM A351 CF3/CF8/CF3M/CF8M
2	COVER	ASTM A 105			
3	HINGE				
4	DISC	ACCORDING TO API 600 TRIM NUMBER			
5	SEAT RING				
6	HINGE PIN				
7	PLUG	A182 F304L / A182 F316L			
8	GASKET	SPIRAL WOUND REINFORCED GRAPHITE / PTFE			
9	BONNET STUD BOLTS/ NUTS	A193 B7 A194 2H	A193 B16 A194 Gr4	A320 L7 A320 Gr7	A193 B8 A194 Gr8

APPLICABLE STANDARDS

Design:
API 6D/ BS 1868/ ANSI B 16-34
Face to face:
ANSI B 16.10
Flange:
B16.5/ B16.47
Bw ends:
ANSI B 16.25
Testing:
API 598 / BS EN ISO 12266 Part 1

MATERIALS

- Carbon Steel
- Stainless Steel
- Alloy Steel
- Duplex - SuperDuplex
- Monel
- Aluminium bronze
- Titanium
- Hastelloy
- Austenitic Steel
- Inconel

CORE FEATURES

- Bolted bonnet
- Renewable seats
- Swing type disc

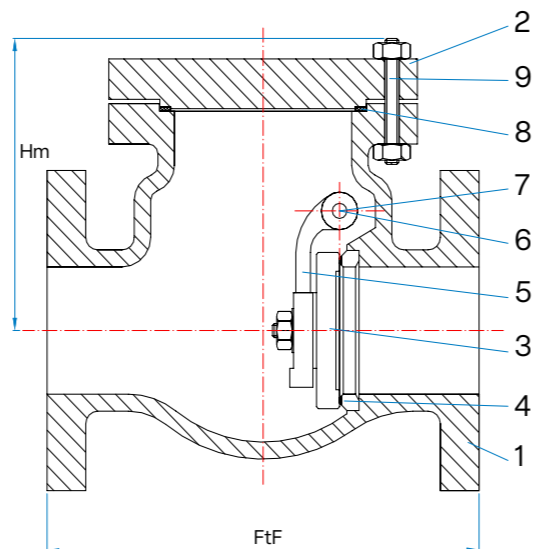
SPECIAL EXECUTION

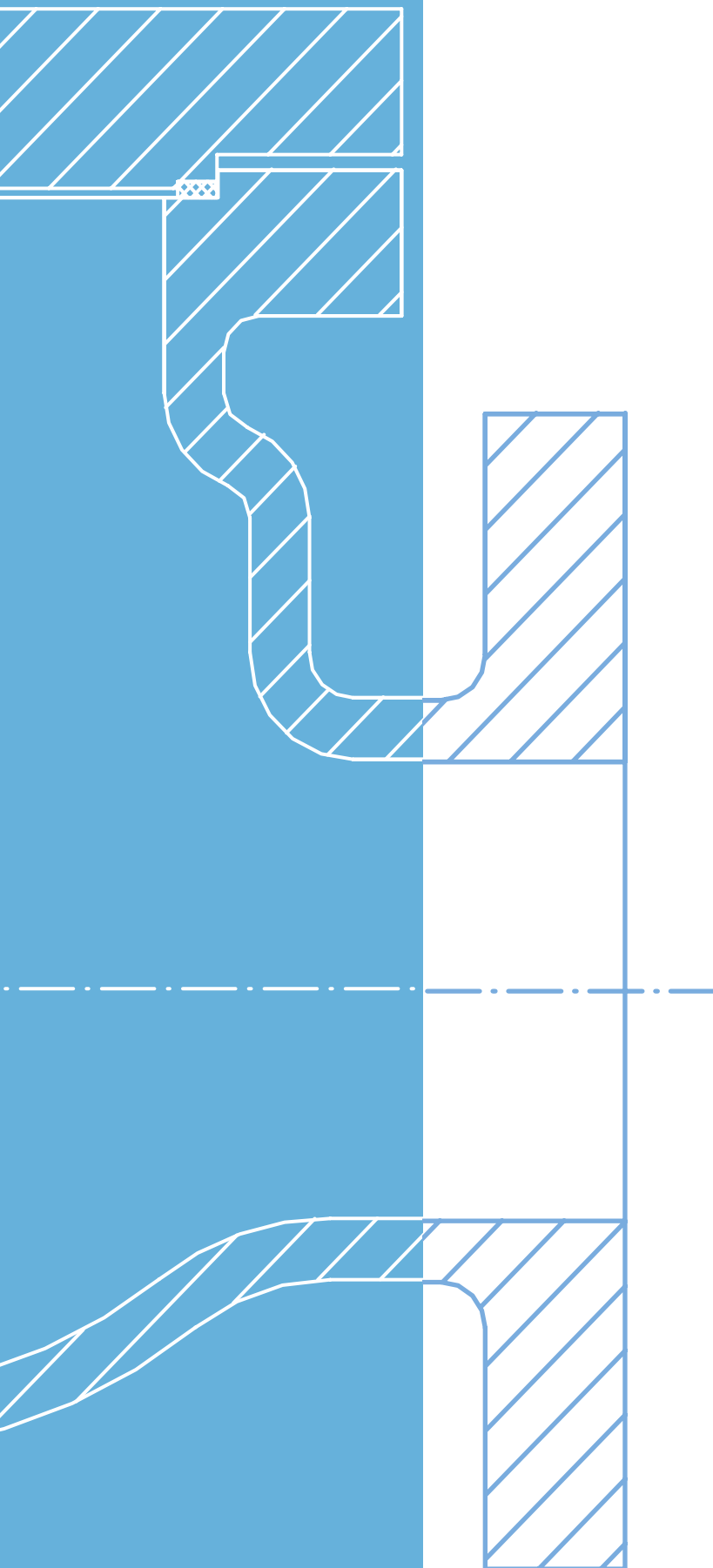
Available upon request
External shaft for actuator/gear coupling

Dimensions

Size	2"	3"	4"	6"	8"	10"	12"	14"	16"	18"	20"	24"	28"	32"	36"
FtF-RF/BW	451	578	673	914	1022	1270	1422	on request							
FtF-RTJ	454	584	683	927	1038	1293	1444								
Hm	280	360	420	560	700	810	920								

Some measures [mm] are indicative and might be subjected to changes





CVB VALVES S.R.L.

via Industria, 24
20020 Arconate
(MI) - ITALY
(+39) 0331 461737
info@cvbvalves.com
sales@cvbvalves.com

www.cvbvalves.com